

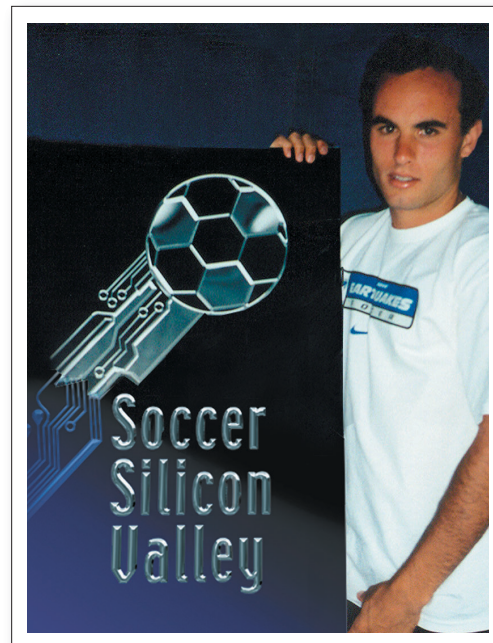
How far would YOU go to save the San Jose Earthquakes?

(Hopefully, as far as downtown San Jose, on August 20.)

Come to the RALLY where we'll send an unmistakable message to the decision makers of Silicon Valley that we don't want Major League Soccer to leave Northern California!

This is our chance (maybe our last chance) to demonstrate our commitment to the team. We're gonna whoop it up just like we did during the playoffs last season. We are the MLS Champions twice over, after all.

Everyone who cares about soccer in the Bay Area will be there. Take an hour for lunch, or take the day off from work. Lunch is free, players and politicians will be in attendance. Come in uniform, or wear your scarf. Above all, bring your voice.



Earthquakes and U.S. National Team star Landon Donovan supports Soccer Silicon Valley.

Friday, August 20 Cesar Chavez Park, San Jose Noon-1:00p.m.



Cesar Chavez Park is on Market Street, between West San Fernando and East San Carlos Streets.

Driving Directions from southbound Highway 101 take Highway 87 (Guadalupe Parkway) and exit at Market Street.

from southbound Interstate 280 take Highway 87 (Guadalupe Parkway) north and exit at Santa Clara Street or Julian Street.

from southbound Interstate 680 (which becomes northbound Interstate 280), take Highway 87 north and exit at Santa Clara Street or Julian Street.

from northbound Highway 101 take Interstate 280 north to Highway 87 north and exit at Santa Clara Street or Julian Street.

from northbound Highway 17 take Interstate 280 south to Highway 87 north and exit at Santa Clara Street or Julian Street.

Downtown Parking Market & San Pedro Street Garage between Santa Clara and St. John Streets.

Third Street Garage between Santa Clara and St. John Streets.

San Fernando & Third Street Surface Lot between Second and Third Streets, north of the San Jose Repertory Theatre.

San Fernando & Second Street Surface Lot between First and Second Streets just north of the Pavilion.

Pavilion Garage on Second Street, between San Fernando and San Carlos Streets.

Second & San Carlos Street Garage between Second and Third Streets, next to Camera Cinemas.

Fourth Street Garage at San Fernando and Fourth Street across from the Library.

Second & St. James Lot just north of St. James Park.

Market & Balbach Lot south of the Convention Center.

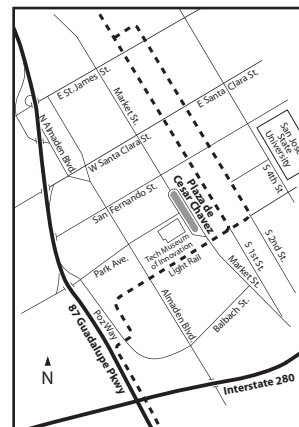
For a map and the most up-to-date information about parking in Downtown San Jose, visit <http://www.sjdowntownparking.com>.

Public Transportation Directions Light Rail

Paseo de San Antonio stop (Santa Teresa line). Walk four blocks west along the Paseo.

Bus (VTA)

Lines 23, 66, 68, 82, 85 & 304 all stop north and southbound at Paseo de San Antonio. Lines 11, 63, 65, 72, 73 & 81 stop at San Fernando & Second on the far side of the parking lot adjacent to the theatre. From other lines, including 22, 64, 180 & 300, get off at Santa Clara & Second and walk two blocks west to Market, then south to the park.



Caltrain Use the San Jose Caltrain Station. Take the Downtown Area (DASH) Shuttle from the Caltrain Station to 4th & Paseo de San Antonio. From the stop, walk four blocks west along the Paseo.

Visit us at www.soccersiliconvalley.com for updates